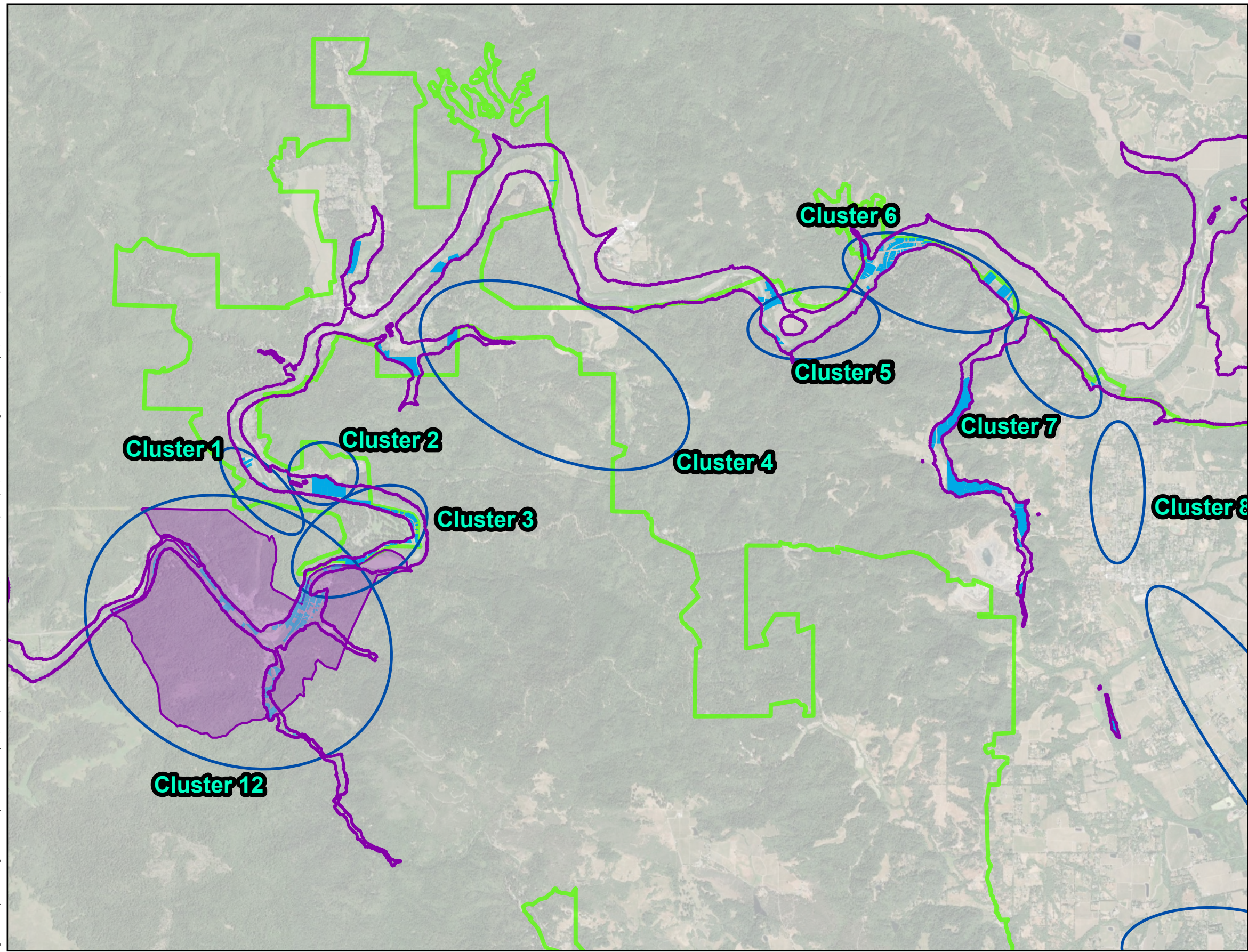


Climate Change Additional Figures

DRAFT

Figure B-1 - Early Climate Change Scenario Floodplain Inundation Map: N:\Clients\798 Russian River County Sanitation District\50-24-05 Water Quality RWSS\GIS\Russian River Modeling\Russian River Analysis.aprx - 10/16/2025



- Cluster Location
- Early 1986 CC Inundation Mapping
- Impacted Parcels Early Century CC Scenario
- Monte Rio & Villa Grande Study Area
- Study Area

- Notes:
1. The flood depth raster was received from the Sonoma County Water Agency (SCWA).
 2. The total number of impacted parcels under baseline conditions is 690, which is 49 more than under baseline conditions.
 3. The parcel count does not quantify the inundated area of each parcel; it includes all parcels that are impacted, regardless of whether they are only slightly inundated or completely flooded.

Prepared by:



0 2,000 4,000 Feet

Prepared for:

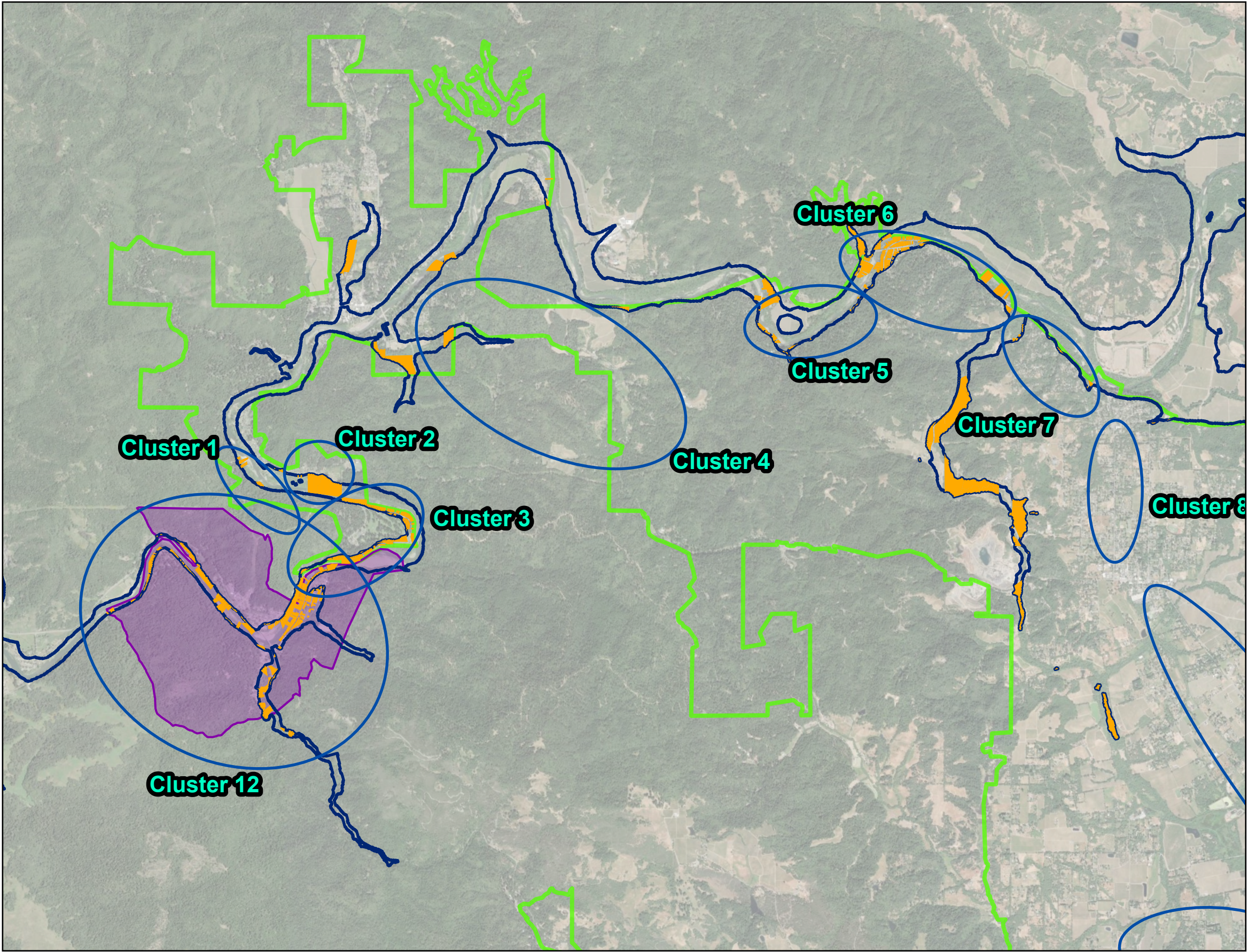
Russian River County Sanitation District
Water Quality and Recycled
Water Supply Feasibility Study








Russian River Basin
Early Climate Change Scenario Inundation Mapping

Figure F-1

Figure B-2 - Mid Climate Change Scenario Floodplain Inundation Map. N:\Clients\798 Russian River County Sanitation District\50-24-05 Water Quality RWSS\GIS\Russian River Modeling\Russian River Analysis\Russian River Analysis.aprx - 10/16/2025



-  Cluster Location
-  Mid 1986 CC Scenario Inundation Mapping
-  Impacted Parcels Mid Century CC Scenario
-  Monte Rio & Villa Grande Study Area
-  Study Area

- Notes:
1. The flood depth raster was received from the Sonoma County Water Agency (SCWA).
 2. The total number of impacted parcels under baseline conditions is 729, which is 88 more than under baseline conditions.
 3. The parcel count does not quantify the inundated area of each parcel; it includes all parcels that are impacted, regardless of whether they are only slightly inundated or completely flooded.

Prepared by:



0 2,000 4,000 Feet

Prepared for:

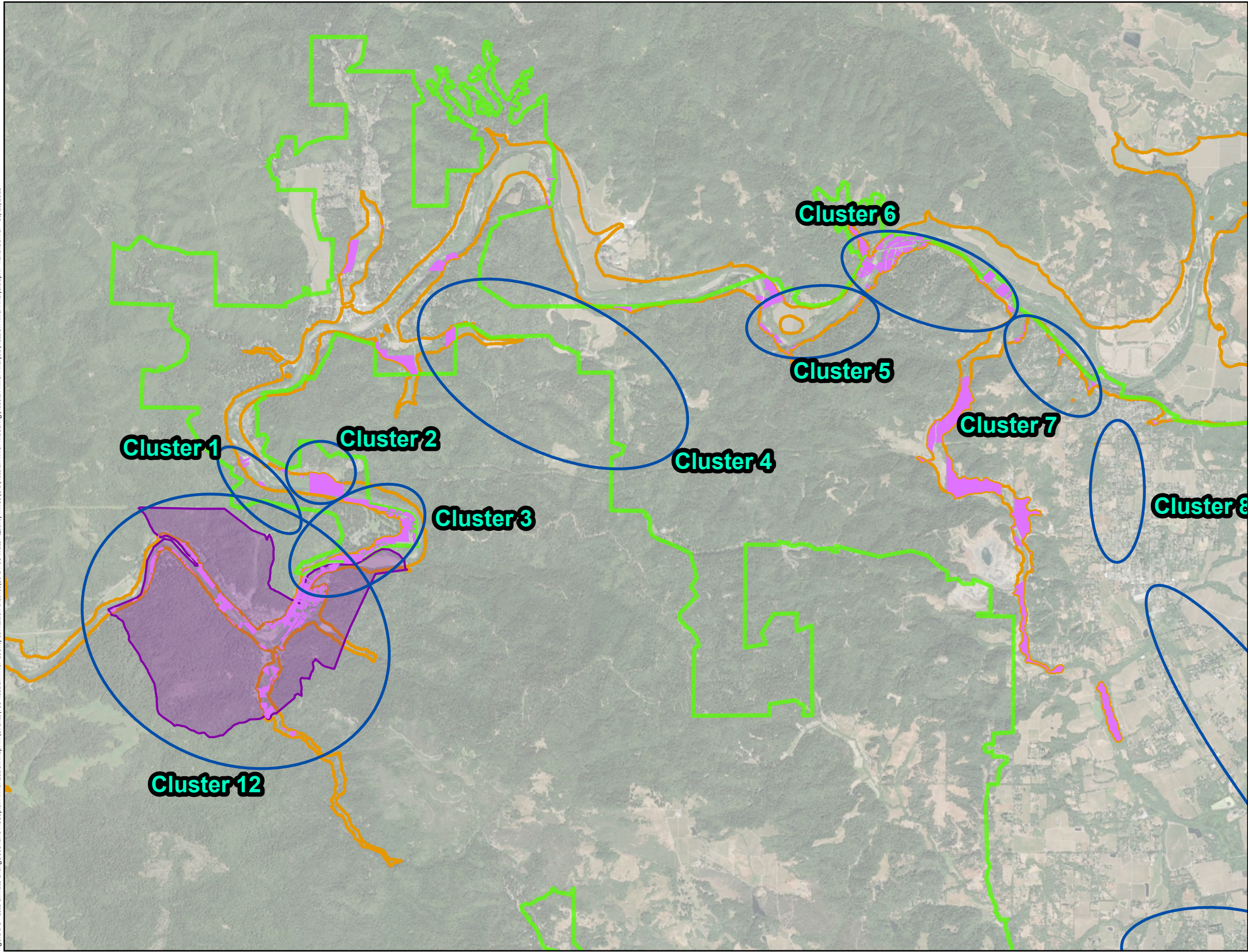
Russian River County Sanitation District
Water Quality and Recycled
Water Supply Feasibility Study



Russian River Basin
Mid Climate Change Scenario Inundation Mapping

Figure F-2

Figure F-3 - Late Climate Change Scenario Floodplain Inundation Mapping



- Cluster Location
- Late 1986 CC Scenario Inundation Mapping
- Impacted Parcels Late Century CC Scenario
- Monte Rio & Villa Grande Study Area
- Study Area

- Notes:
1. The flood depth raster was received from the Sonoma County Water Agency (SCWA).
 2. The total number of impacted parcels under baseline conditions is 832, which is 191 more than under baseline conditions.
 3. The parcel count does not quantify the inundated area of each parcel; it includes all parcels that are impacted, regardless of whether they are only slightly inundated or completely flooded.

Prepared by:



0 2,000 4,000 Feet

Prepared for:

Russian River County Sanitation District
Water Quality and Recycled
Water Supply Feasibility Study



Russian River Basin
Late Climate Change Scenario Inundation Mapping

Figure F-3